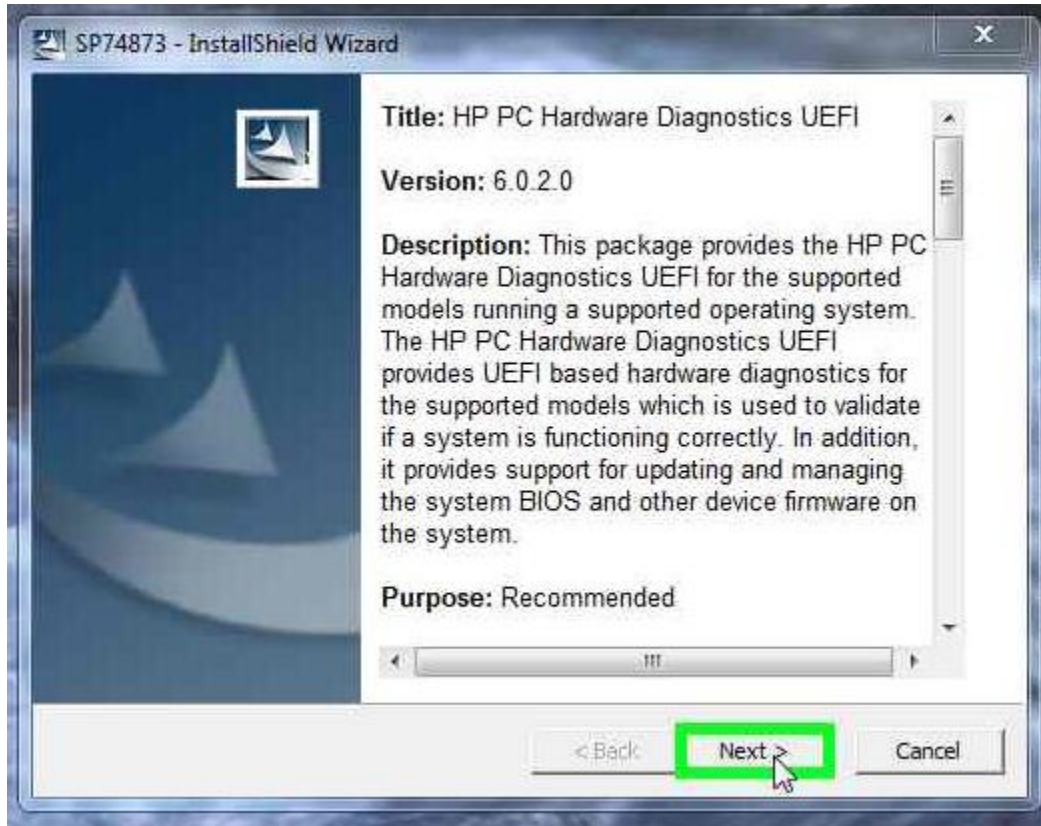


**Problem Step 1: (4/13/2016 11:29:41)** User left click on "Next > (push button)" in "SP74873 - InstallShield Wizard"

双击运行 softpaq



[Previous Next](#)

**Problem Step 2: (4/13/2016 11:29:42)** User left click on "Next > (push button)" in "SP74873 - InstallShield Wizard"

下一步



[Previous](#) [Next](#)

**Problem Step 3: (4/13/2016 11:29:51)** User left click in "HP PC Hardware Diagnostics UEFI - InstallShield Wizard"

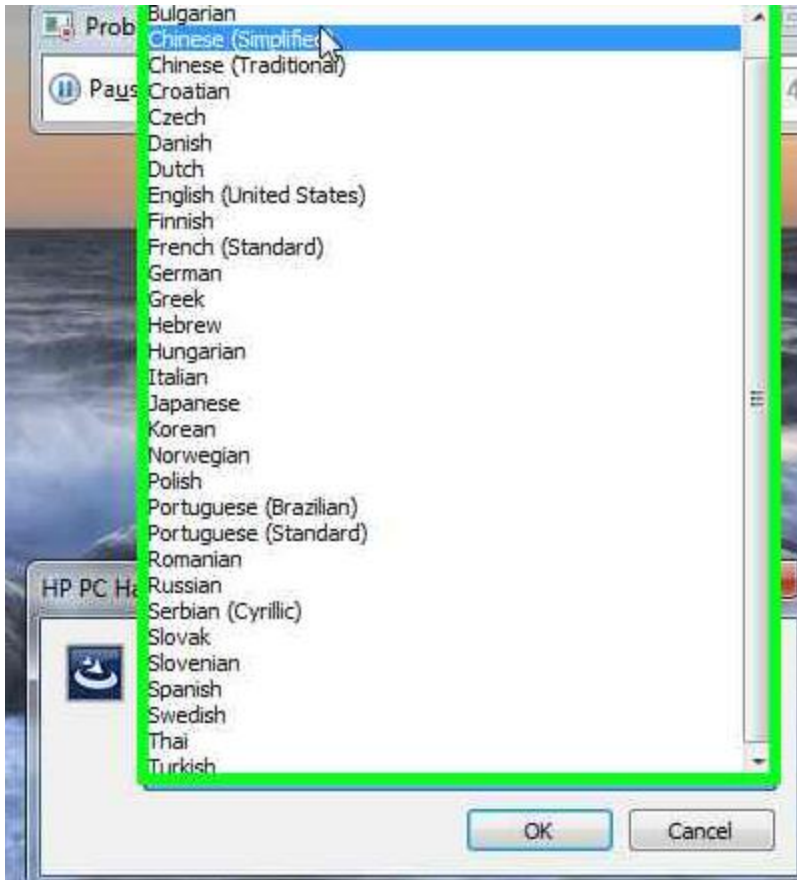
选择语言



[Previous](#) [Next](#)

**Problem Step 4: (4/13/2016 11:29:54)** User left click on "Chinese (Simplified) (list item)"

选择简体中文



[Previous](#) [Next](#)

**Problem Step 5: (4/13/2016 11:29:55)** User left click on "OK (push button)" in "HP PC Hardware Diagnostics UEFI - InstallShield Wizard"

确定开始安装



[Previous](#) [Next](#)

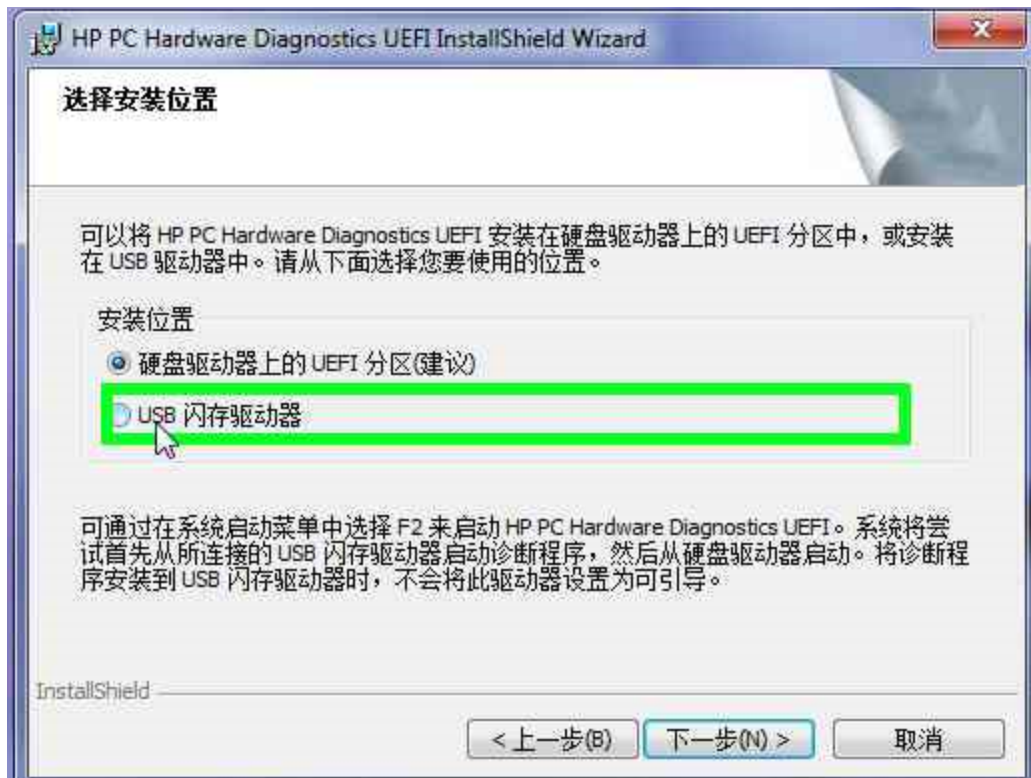
**Problem Step 6: (4/13/2016 11:30:05)** User left click on "下一步(N) > (push button)" in "HP PC Hardware Diagnostics UEFI InstallShield Wizard"

下一步



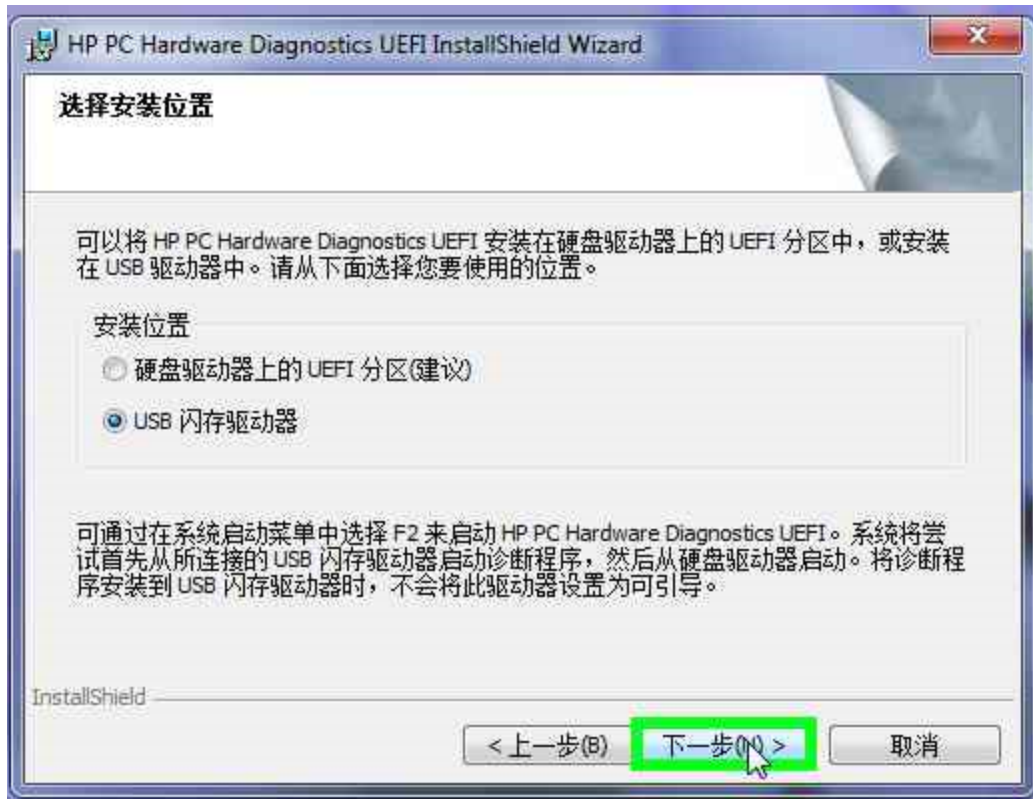
[Previous Next](#)

**Problem Step 7: (4/13/2016 11:30:08)** User left click on "USB 闪存驱动器 (radio button)" in "HP PC Hardware Diagnostics UEFI InstallShield Wizard"  
选择 USB



[Previous Next](#)

**Problem Step 8: (4/13/2016 11:30:09)** User left click on "下一步(N) > (push button)" in "HP PC Hardware Diagnostics UEFI InstallShield Wizard"



[Previous](#) [Next](#)

**Problem Step 9: (4/13/2016 11:31:21)** User left click on "安装(I) (push button)" in "HP PC Hardware Diagnostics UEFI InstallShield Wizard"



[Previous](#) [Next](#)

**Problem Step 10: (4/13/2016 11:31:54)** User left click on "完成(F) (push button)" in "HP PC Hardware Diagnostics UEFI InstallShield Wizard"



[Previous](#) [Next](#)

**Problem Step 11: (4/13/2016 11:32:09)** User left click on "Name (editable text)" in "HP\_TOOLS (E:)"

打开 U 盘（HP\_TOOLS）看里面已经有文件夹，里面是诊断文件。

